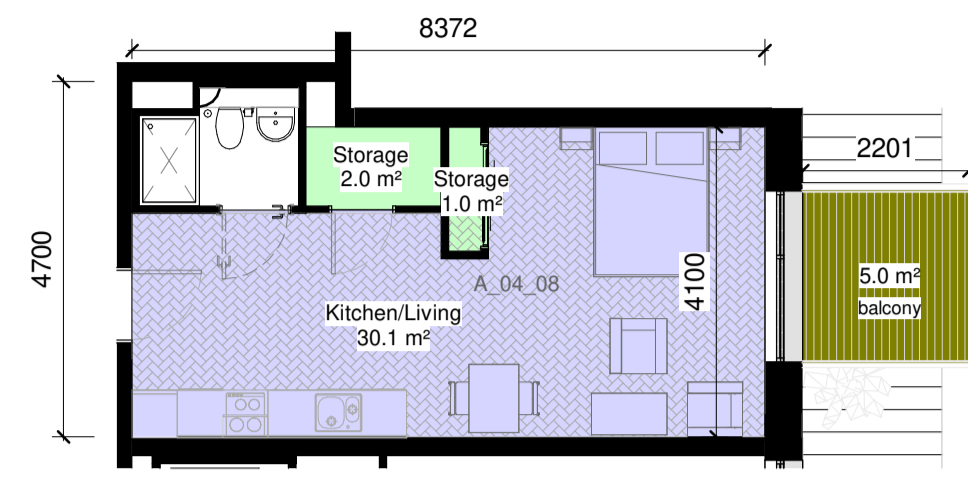
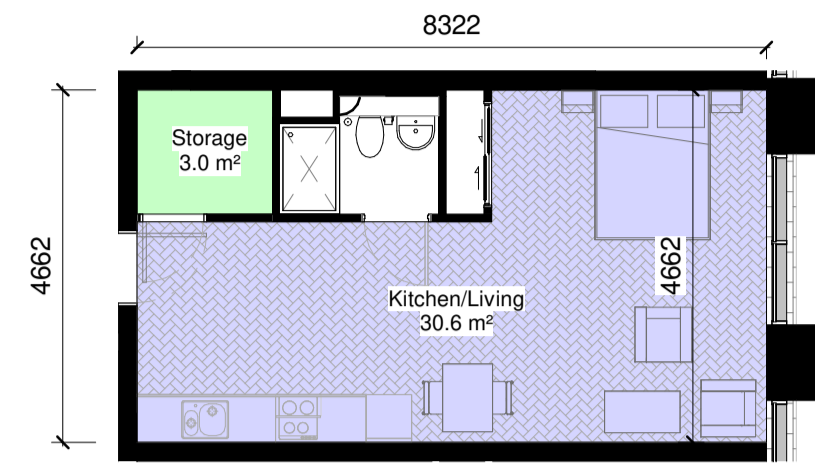


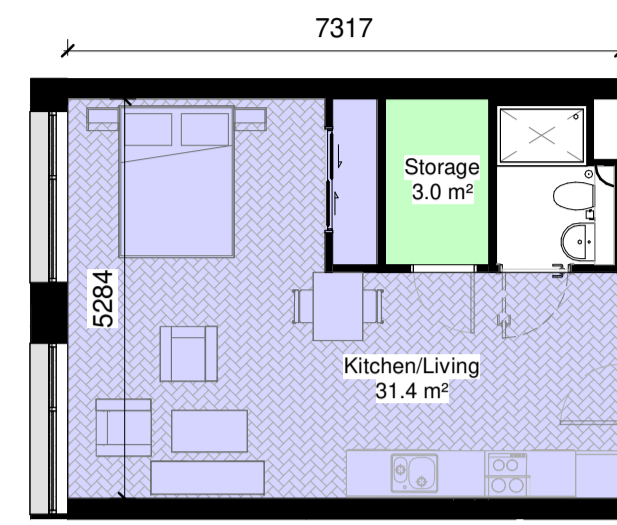
STUDIO TYPES



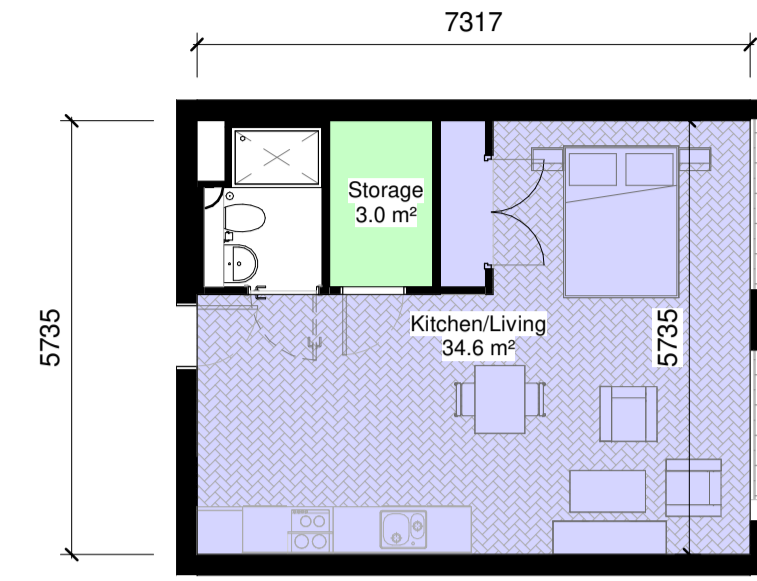
S.01
1:100



S.01.1
1:100



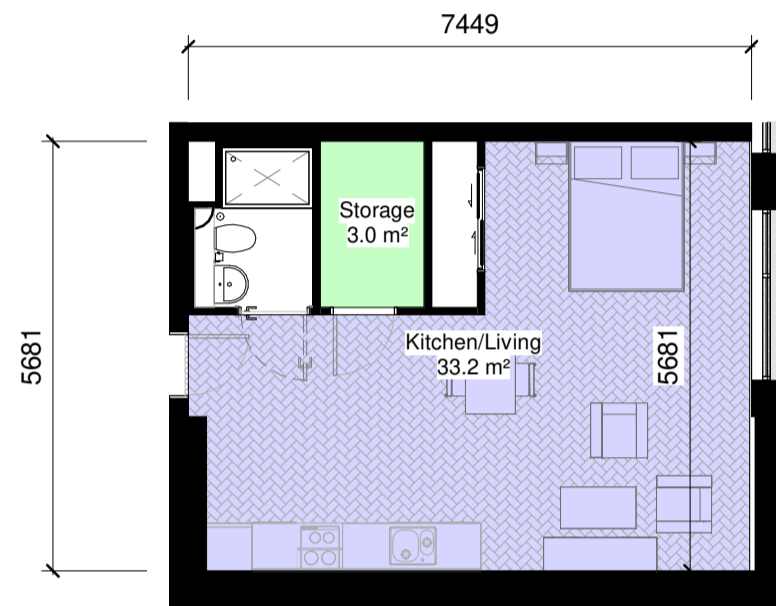
S.02
1:100



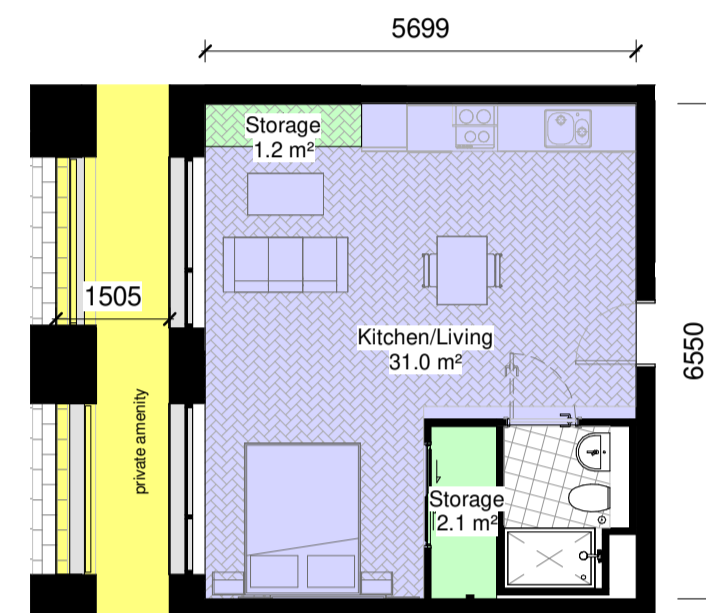
S.03
1:100



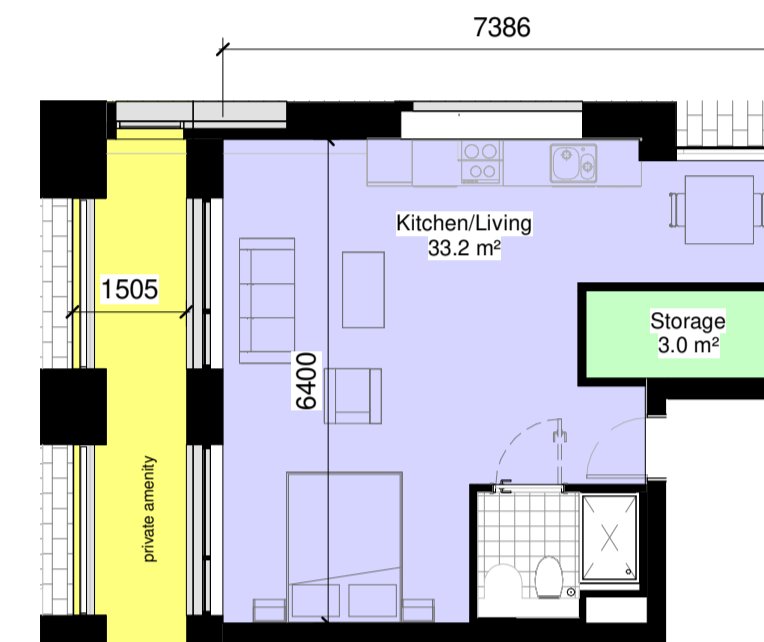
S.04
1:100



S.06
1:100



S.07
1:100



S.08
1:100

Notes:
 - Do not scale from this drawing. Use figured dimensions in all cases.
 - Verify dimensions on site and report any discrepancies to the Architect immediately.
 - This drawing is to be read in conjunction with the Architect's Specification.
 - © This drawing is copyright and may only be reproduced with the Architect's permission.

Drawing Notes:

Rev.	Date	Drawn	Details of Issue / Revision
P01	02/07/21	E08	Issued for Planning

Issues & Revisions

W: www.reddyarchitecture.com
 E: info@reddyarchitecture.com

Client Details:
 HPREF HSQ Investments Limited

Project Details:
 HSQ Feasibility
 Heuston South Quarter, St John's Rd W,
 Kilmainham, Dublin 8

Drawing Title:
 Apartment Types Sheet 3

Job No. P19-213D	Sheet Size: A1	Scale @A1: 1:100
Issue Date: 05/13/21	Drawn By: job	Reviewed By: eob
Status: HSQ	Purpose of Issue Planning permission	
Project-Originator-Zone-Level-Type-Role-Classification-Number RAU-ZZ-DR-A-APT-003		Revision P 01